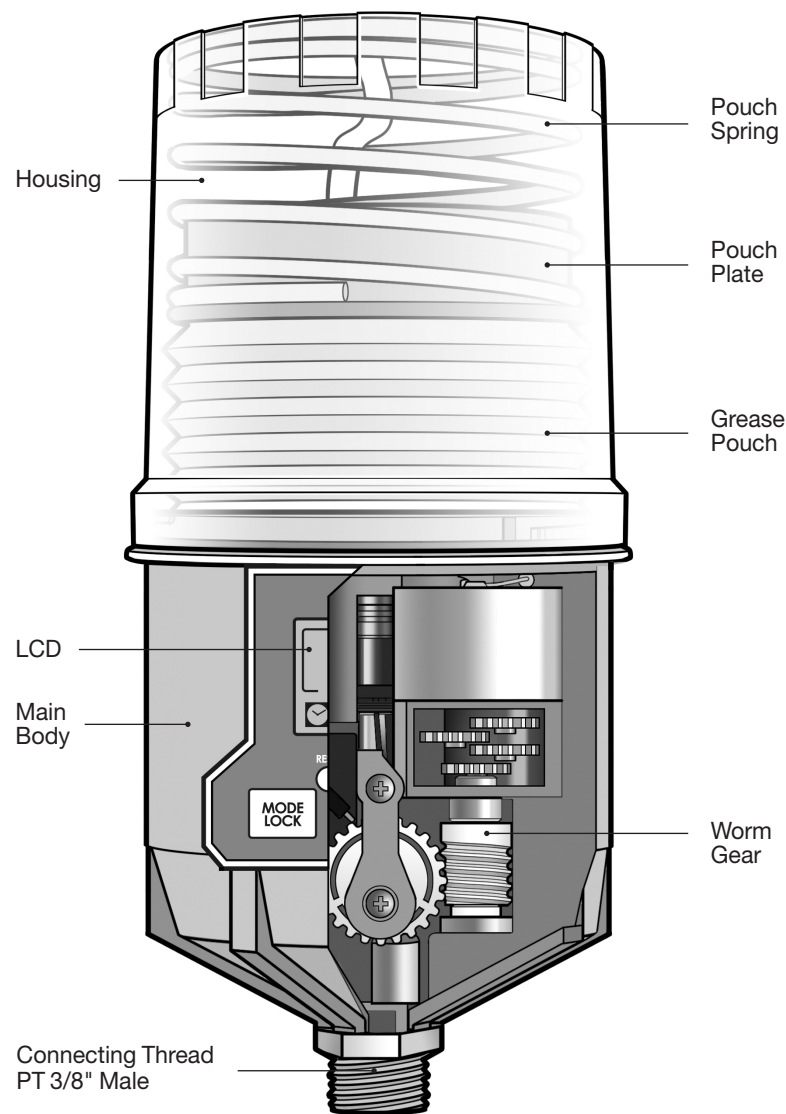
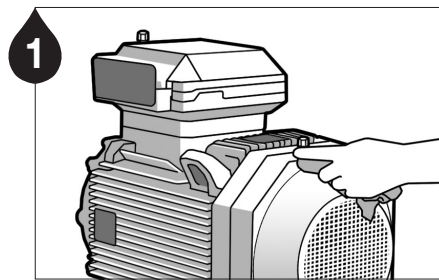


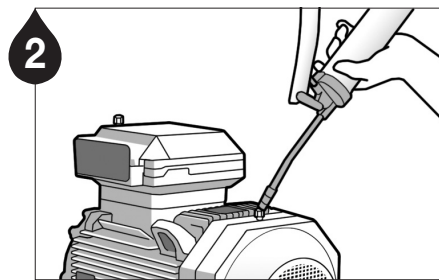
Product Details



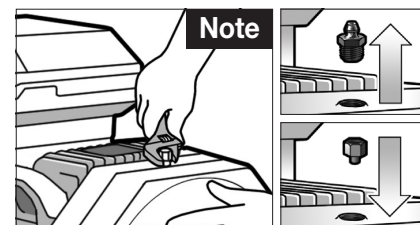
Installation Guideline



1 Remove contaminants around the lube point.



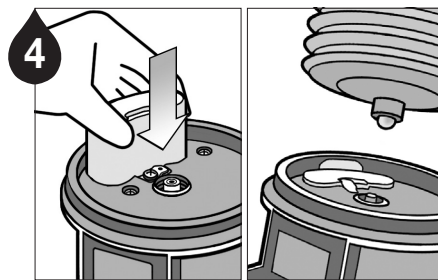
2 Ensure a clear passage using a manual grease gun. **Note1** Remove any hardened grease by purging the lube point with a manual grease gun. **Note2** The grease in the equipment and the grease contained in the unit should be the same or compatible.



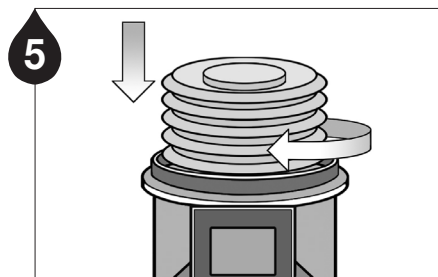
3 Remove the grease nipple and install appropriate adaptors.



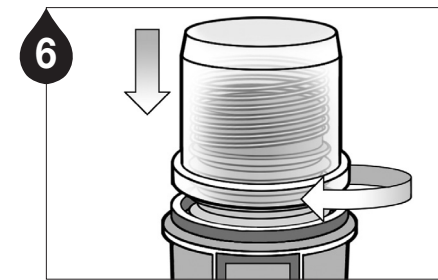
4 Check the grease pouch capacity and the service pack items (battery pack, grease pouch & dust cover).



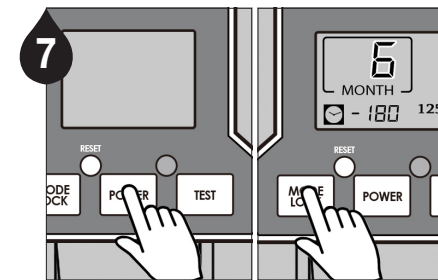
5 Insert battery pack and purge the grease pouch until grease comes out of the tip.



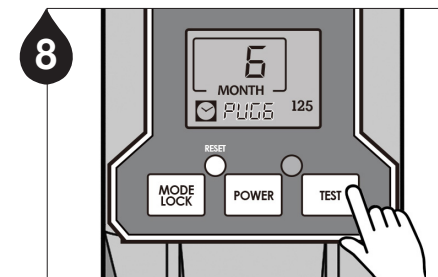
6 Carefully screw the grease pouch in by turning clockwise. Do not over tighten.



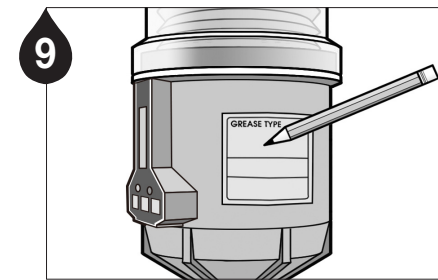
7 Refit the top housing on the unit and turn clockwise until it clicks.



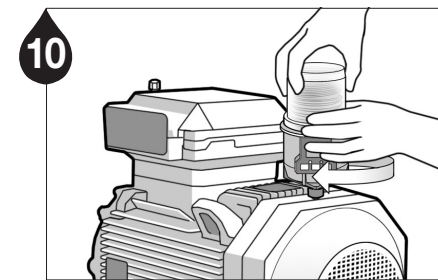
8 Press **POWER** button for 2 seconds to power on. Press **MODE** button to select dispensing period.



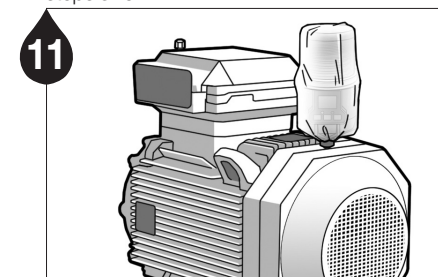
9 Press the **TEST** button for 2 seconds to run a test cycle and check for proper operation of the unit.



10 Note the installation date and the scheduled completion date of lube cycle on the lubricator using the label provided in the Service Pack for maintenance purposes.



11 Install the Lubri-Cup EM unit on the lube point. When the selected dispensing period has completed, replace the Service Pack following steps 3-6.



12 Install the dust cover over the lubricator for added protection.

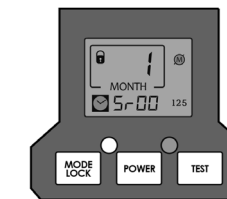
Troubleshooting Guideline

Sr00 (Sensor)

Error : Operation on hold due to non-detection of motor sensor

Possible Cause : Problem with the motor sensor

Solution : Contact your supplier

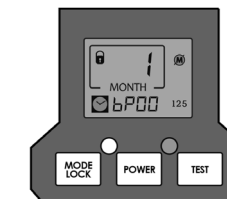


bP00 (Backpressure)

Error : Excessive backpressure indication

Possible Cause : Hardened grease obstructing lube point or kinked lube line

Solution : Purge grease into the lube point using a clean manual grease gun to eliminate possible hardened grease that may be causing an obstruction. This will alleviate excessive backpressure. Reduce lube line length if possible.

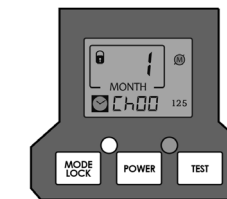


Ch00 (Check)

Error : Motor not responding

Possible Cause : Electric motor may not be able to activate due to possible electrical problem

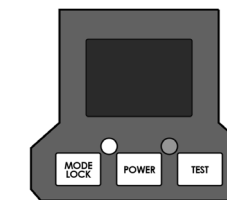
Solution : Contact your supplier



Error : Blank LCD screen

Possible Cause : CPU electrical malfunction or battery problem

Solution : Replace battery pack / Press reset button to restart the lubricator / Contact your supplier if problem persists



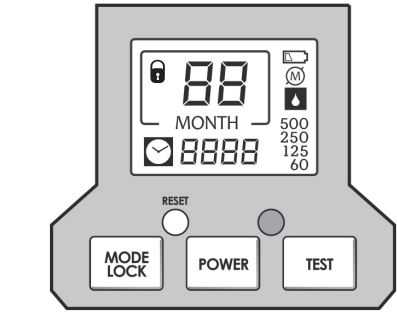
Button Operation

MODE LOCK
Dispensing Period
 1~12 month
 Automatic Lock Out Mode
 Press for 2 seconds to unlock (🔒)

POWER
 Power **ON/OFF**
 Press for 2 seconds to power unit on or off

TEST
Purge Mode
 ON : Press for 2 seconds
 OFF : Short press of button
 (will stop after completion of ongoing cycle)

RESET
 Reset to default setting when the unit malfunctions and/or after changing the Service Pack



MODE LOCK + **TEST**
 Backlight **ON/OFF**
 Hold the Mode button and then press the Test button

LCD Display

6
 MONTH
 Dispensing period setting

- 180
 Remaining dispensing days

🔒
 Automatic Lock Out mode

60/125
250/500
 Grease pouch capacity

🔋
 Low battery power

M
 Operation of the lubricator has been interrupted (refer to Troubleshooting Guideline)

💧
 Dispensing period has completed

📧 Ch00
 Number of days operation has been on hold due to motor error

📧 Sr00
 Number of days operation has been on hold due to motor sensor error

📧 bP00
 Number of days operation has been on hold due to backpressure

📧 PUG6
 Number of remaining purge cycles

📧 St03
 Number of days since dispensing period has completed
 (🔋 and 🔌 will also display)

Red LED
 LED blinks when battery is low, excessive backpressure exists, or dispensing period has completed

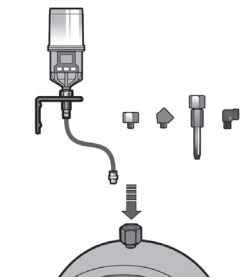
Green LED
 LED blinks during normal operation

Certification



This device complies with Part 15 of the FCC Rules. Operation is subject to the following two conditions : (1) This device may not cause harmful interference, and (2) this device must accept any interference received, including interference that may cause undesired operation.

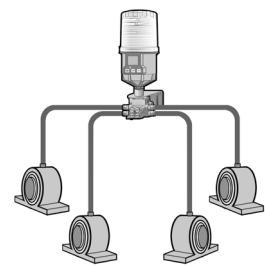
Mounting Methods



Single Point Installation
Direct Mount or Remote Installation using Lube Line

Direct mount is always preferable. For applications not allowing a direct installation, remotely mount the unit using appropriate accessories and keep the distance from the lube point as short as possible.

For remote installation using a tube, use a Ø6 (1/4") tube pre-filled with the same or compatible grease as the grease contained in the unit.



Multi-Point Installation
Multi-Point Remote Installation using Progressive Divider Block (2~8 Points)

Remote multi-point lubrication is available with the Lubri-Cup EM using a divider block. It is recommended to test the back pressure of the bearing, lube lines, and divider block after assembly using a grease gun connected to a pressure gauge. Ensure the break-off pressure is below the average operating pressure of 30bar (435psi).

Warning

- ▶ For remote installation, keep the maximum distance at 6m (20ft) or less.
- ▶ Do not plug any open ports on the divider block. The kit or divider block must be ordered with the appropriate number of points required. For more information on the divider block, please refer to the Multi-Point Remote Installation Manual.
- ▶ Use the lithium battery pack for specific applications such as : extremely cold temperatures, any multi-point or long distance single point (greater than 10ft.) for 500ml unit.

ISO9001/14001



A.W. Chesterton Company
 860 Salem Street, Groveland, MA 01834, USA
 © 2019 A.W. Chesterton Company.
 ® Registered trademark owned and licensed by A.W. Chesterton Company in USA and other countries, unless otherwise noted. www.chesterton.com

A.W. Chesterton Company makes no representations or warranties with respect to the completeness or accuracy of the data or information contained herein. A.W. Chesterton does not assume any liability for any losses or damages resulting from the use or application of the data or information contained herein. Application conditions may influence the outcome of the usage of the product. For specific guidance concerning usage and application conditions, please contact Application Engineering at A.W. Chesterton.



User Manual

LUBRI-CUP™ EM
Series
(60ml/125ml/250ml/500ml)

